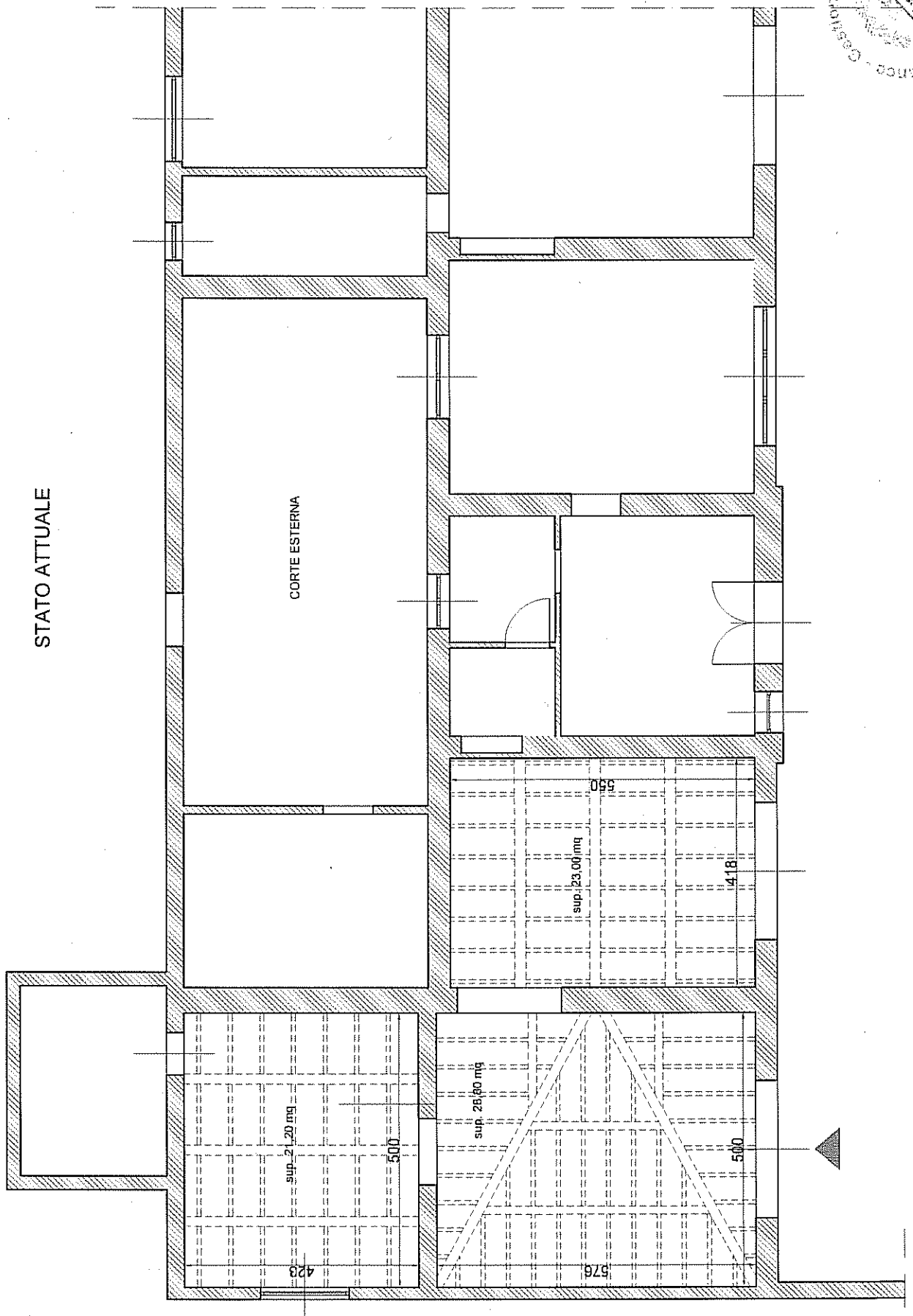
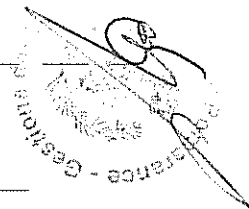
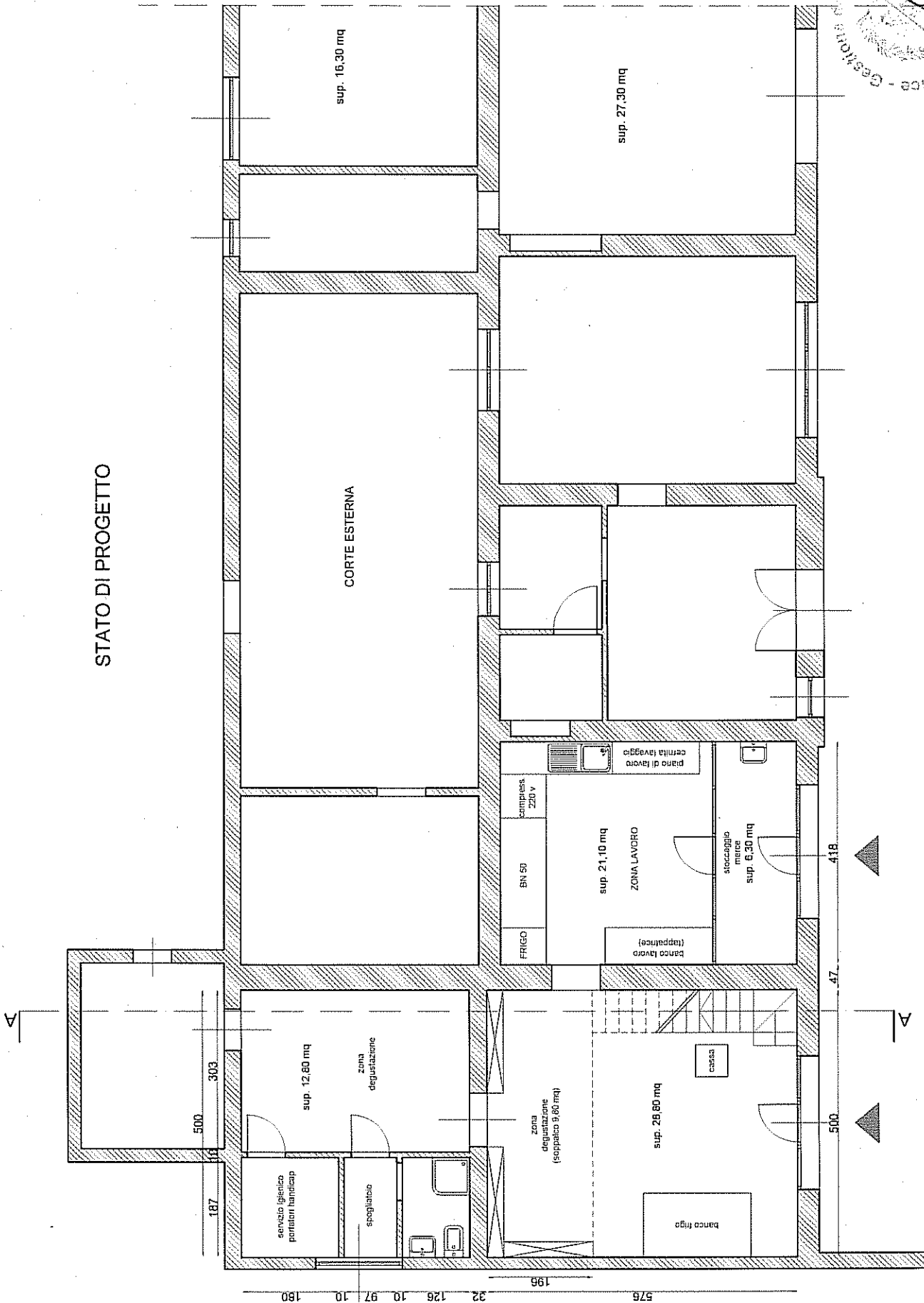


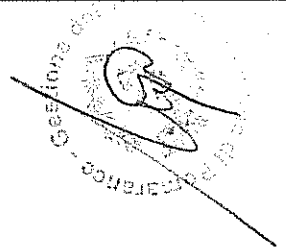
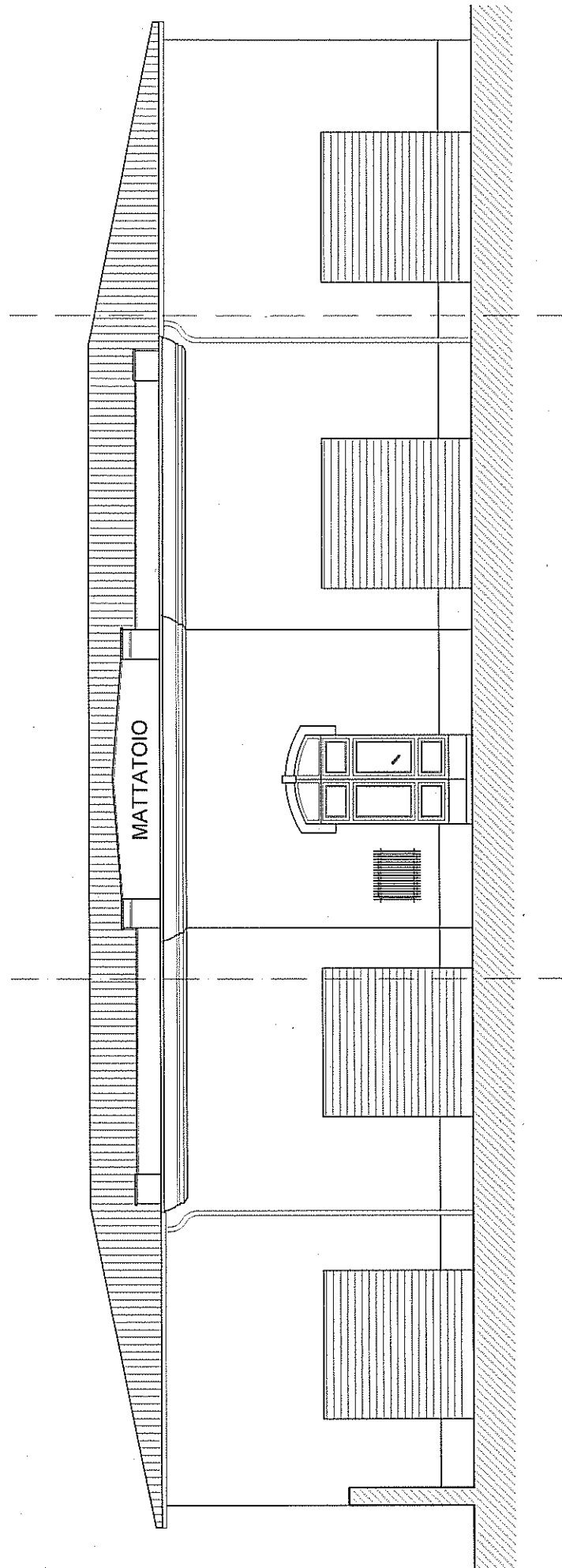
STATO ATTUALE



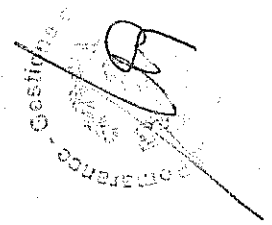
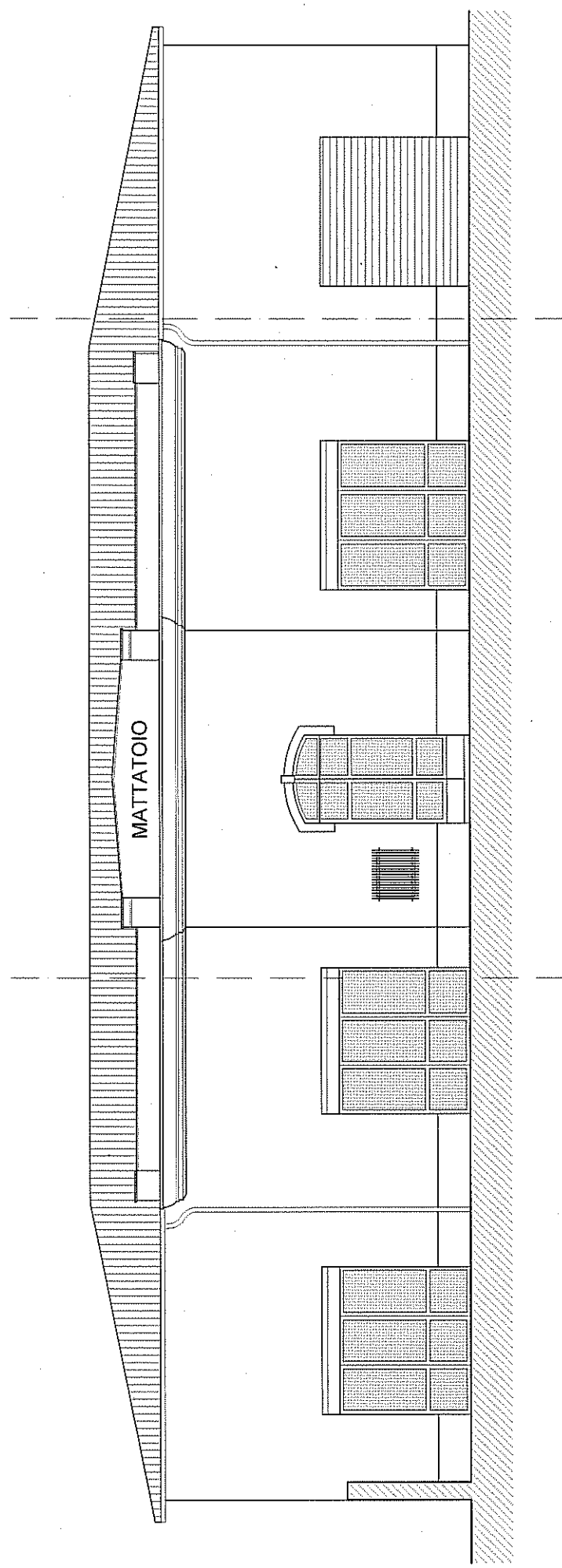
STATO DI PROGETTO

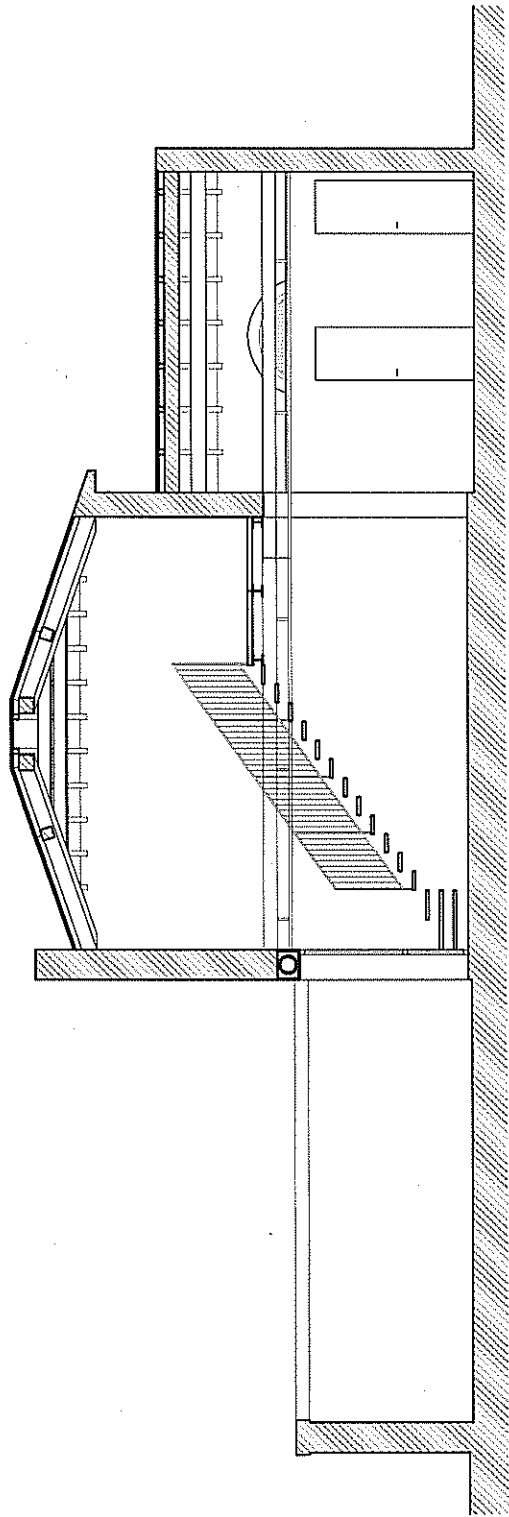


PROSPETTO PRINCIPALE
(stato attuale)

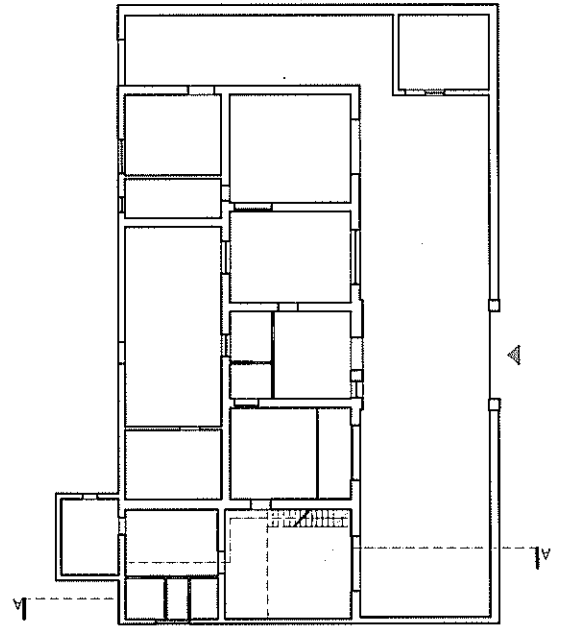


PROSPETTO PRINCIPALE
(stato di progetto)

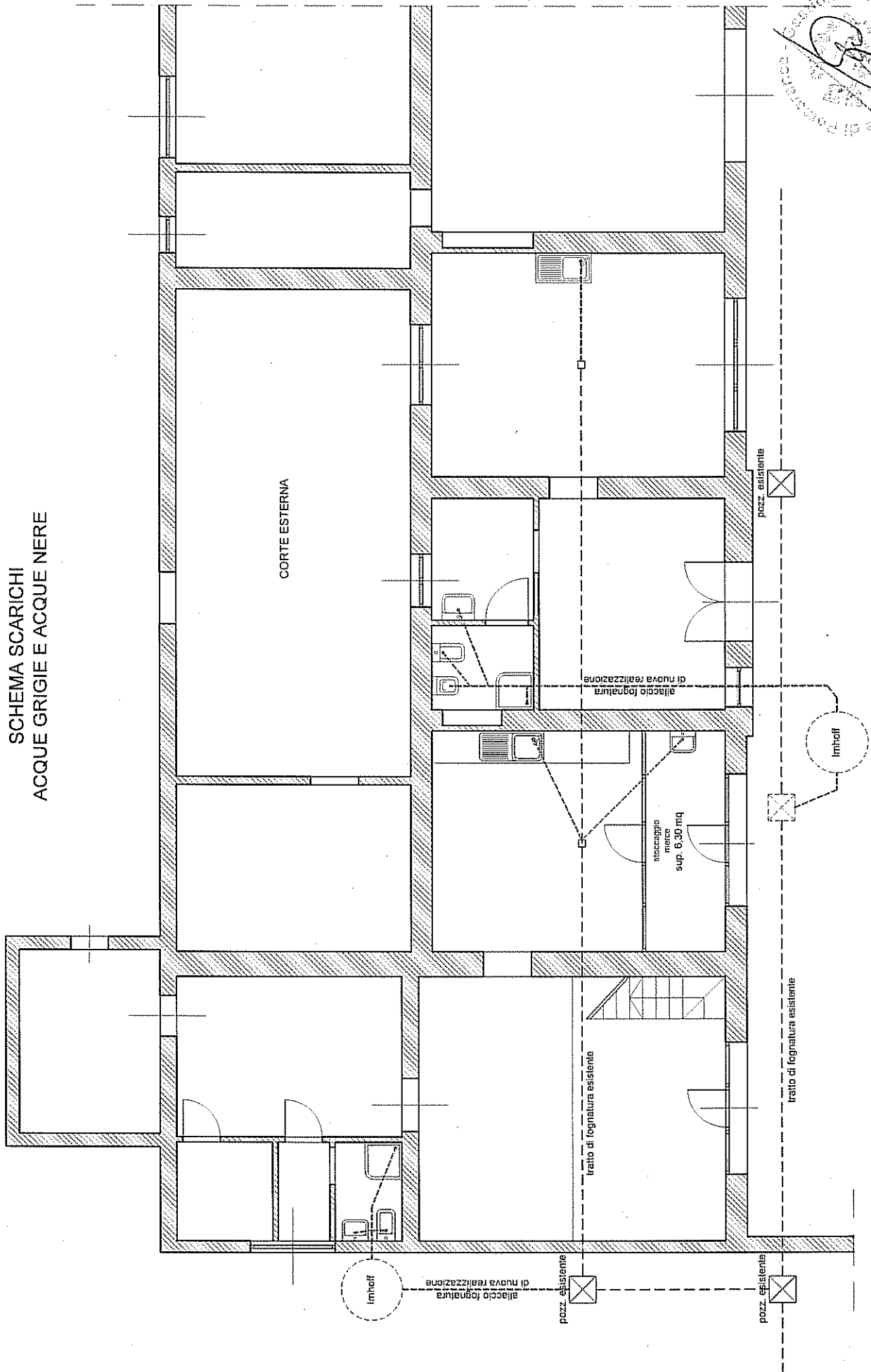




SEZIONE A-A



SCHEMA SCARICHI
ACQUE GRIGIE E ACQUE NERE



SCHEMA IMPIANTO ELETTRICO

LEGENDA:

- INTERRUTTORE UNIPOLARE
- DEVIATORE
- PRESA 10/16A
- APPARECCHIO DI ILLUMINAZIONE A TUBI FLUORESCENTI 2X58W
- QUADRO ELETTRICO
- CENTRO LUCE A PARETE
- CENTRO LUCE
- SCATOLA DI DERIVAZIONE

